

# Zig-zag type level gauge

## Model : L120 (Reflex type)

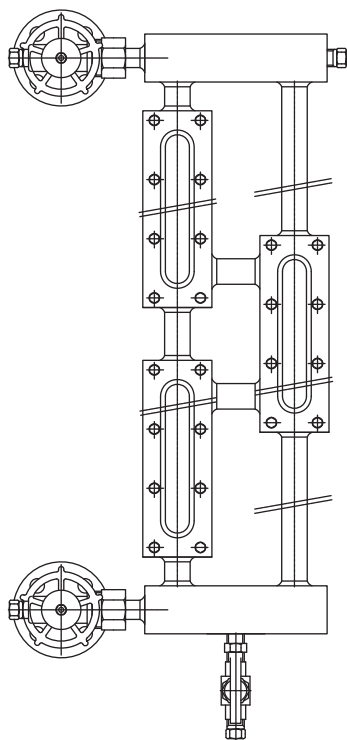
## L220 (Transparent type)

Spec. sheet no. LD01-03

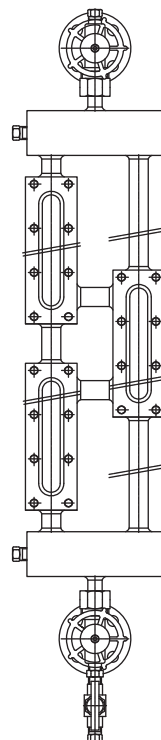
### Description

This level gauge is possible to measure the level point without any dead point between cover and installed on LPT tank or butan tank.

It's applicable to reflex and transparent type level gauges.



Model : L120 (Reflex type)



Model : L220 (Transparent type)

### Specification

#### Model : L120 (Reflex type)

##### Material

Carbon steel, Stainless steel

##### Max. pressure

10 MPa

##### Vessel connection

$\frac{1}{2}$ ",  $\frac{3}{4}$ " and 1"

#### Model : L220 (Transparent type)

##### Material

Carbon steel, Stainless steel

##### Max. pressure

10 MPa

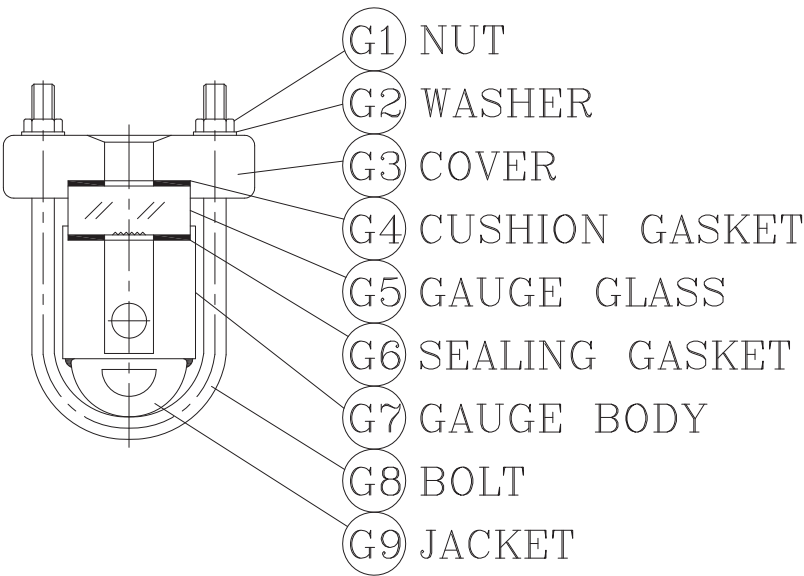
##### Vessel connection

$\frac{1}{2}$ ",  $\frac{3}{4}$ " and 1"

**Optional**  
**Jacket type level gauge for L100 and L200**

Spec. sheet no. LD01-04

**Model : L100 (Jacket type)**



**Model : L200 (Jacket type)**

